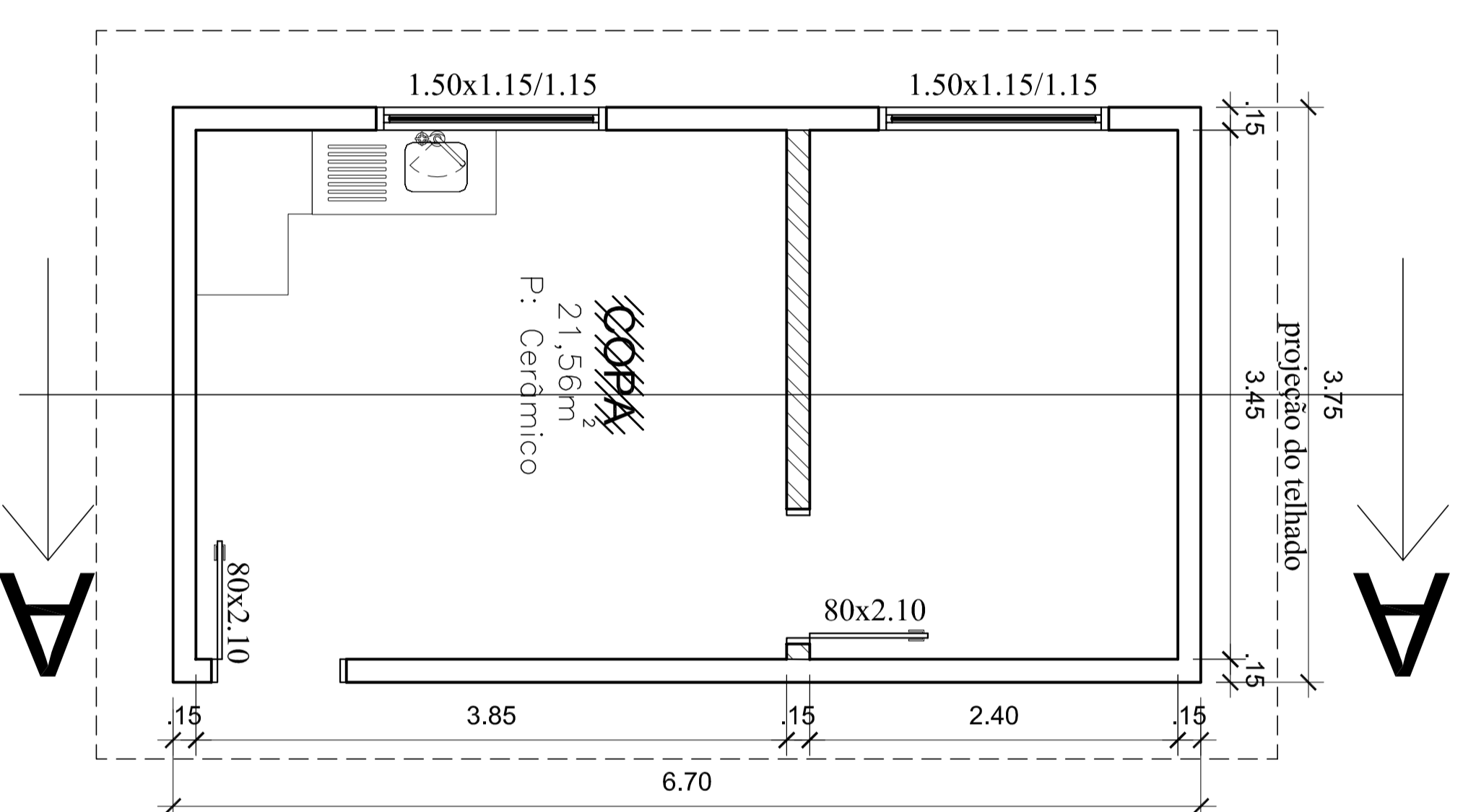
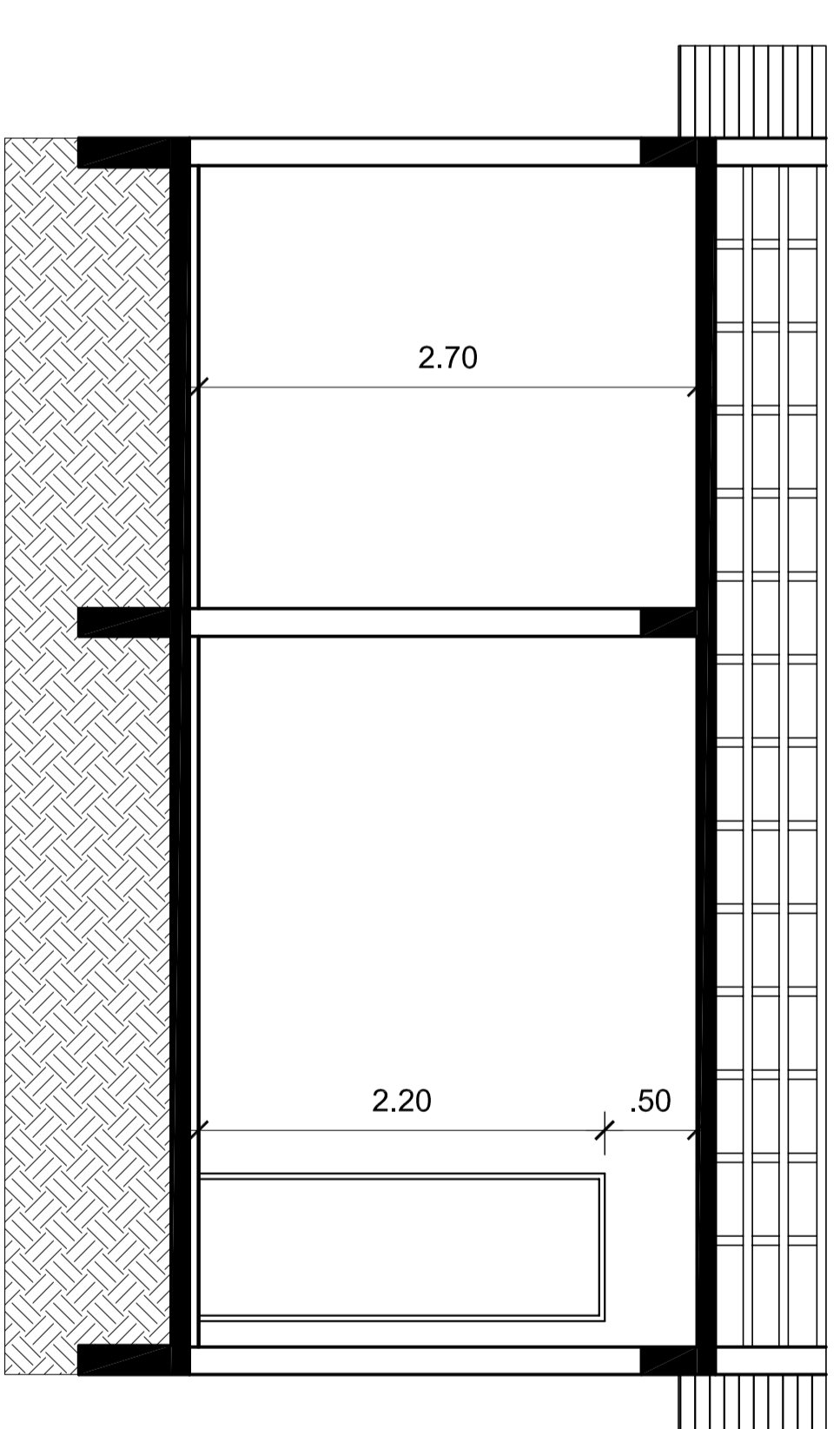


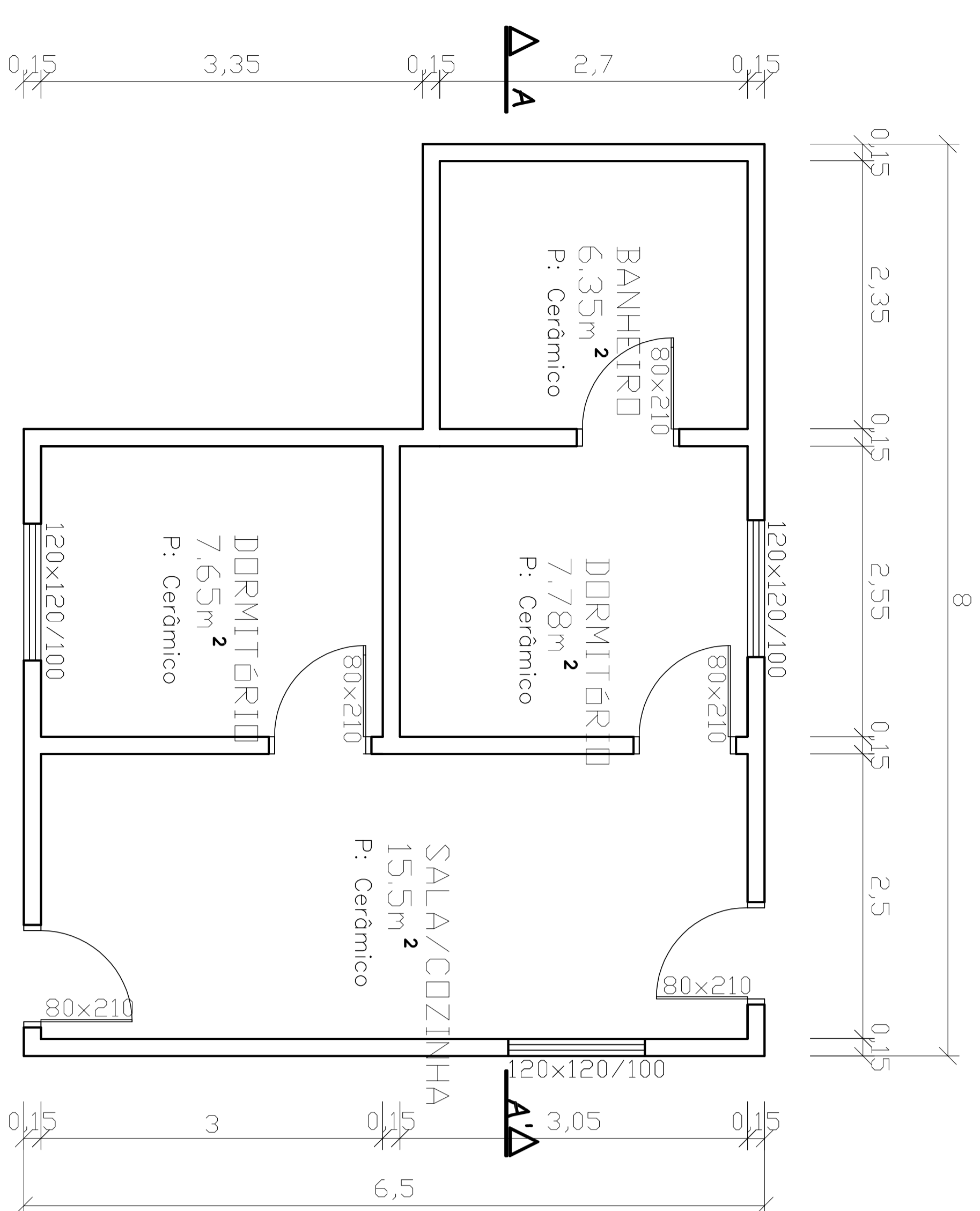
FACHADA FRONTAL  
Esc.: 1/50



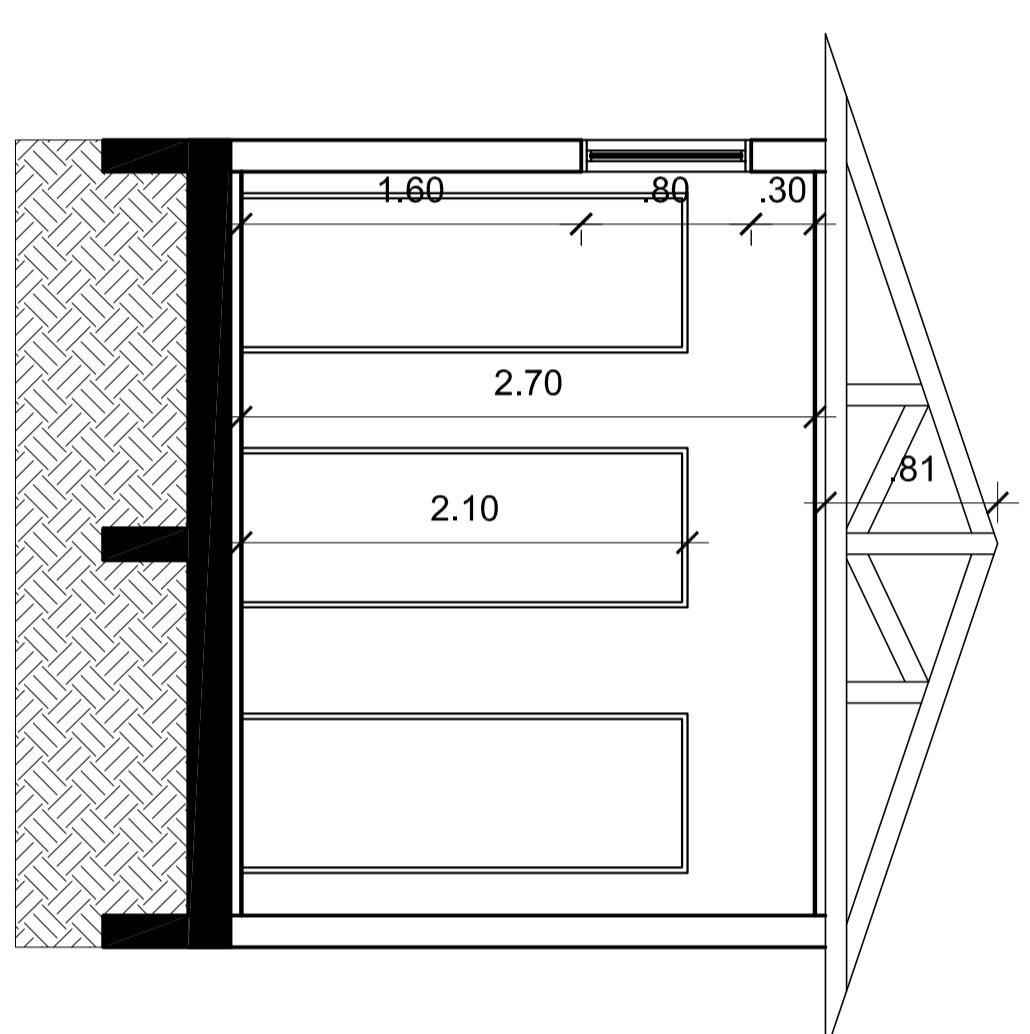
Planta Baixa - Copa  
A: 25,12m<sup>2</sup>  
E: 1/50



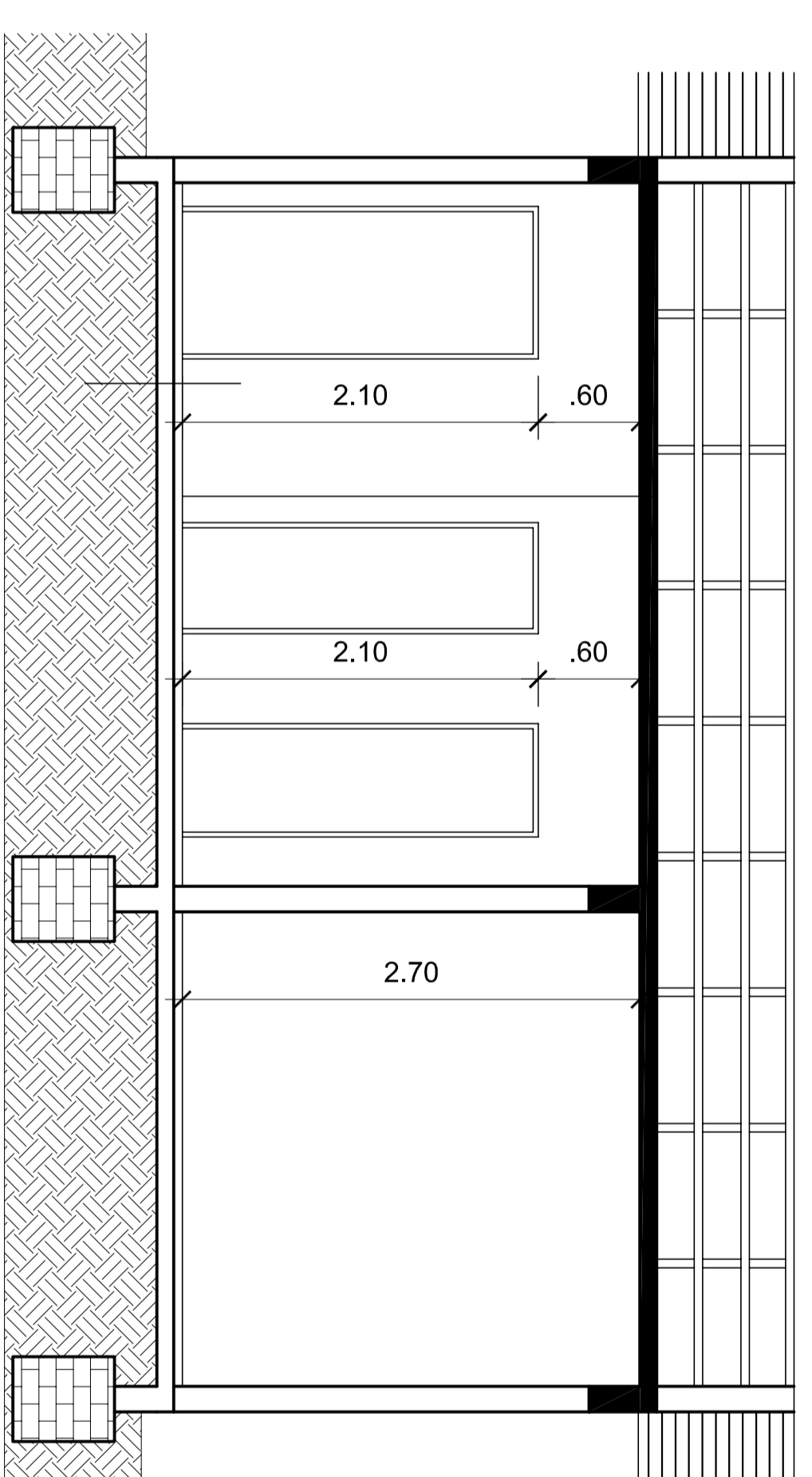
Corte AA - Copa  
E: 1/50



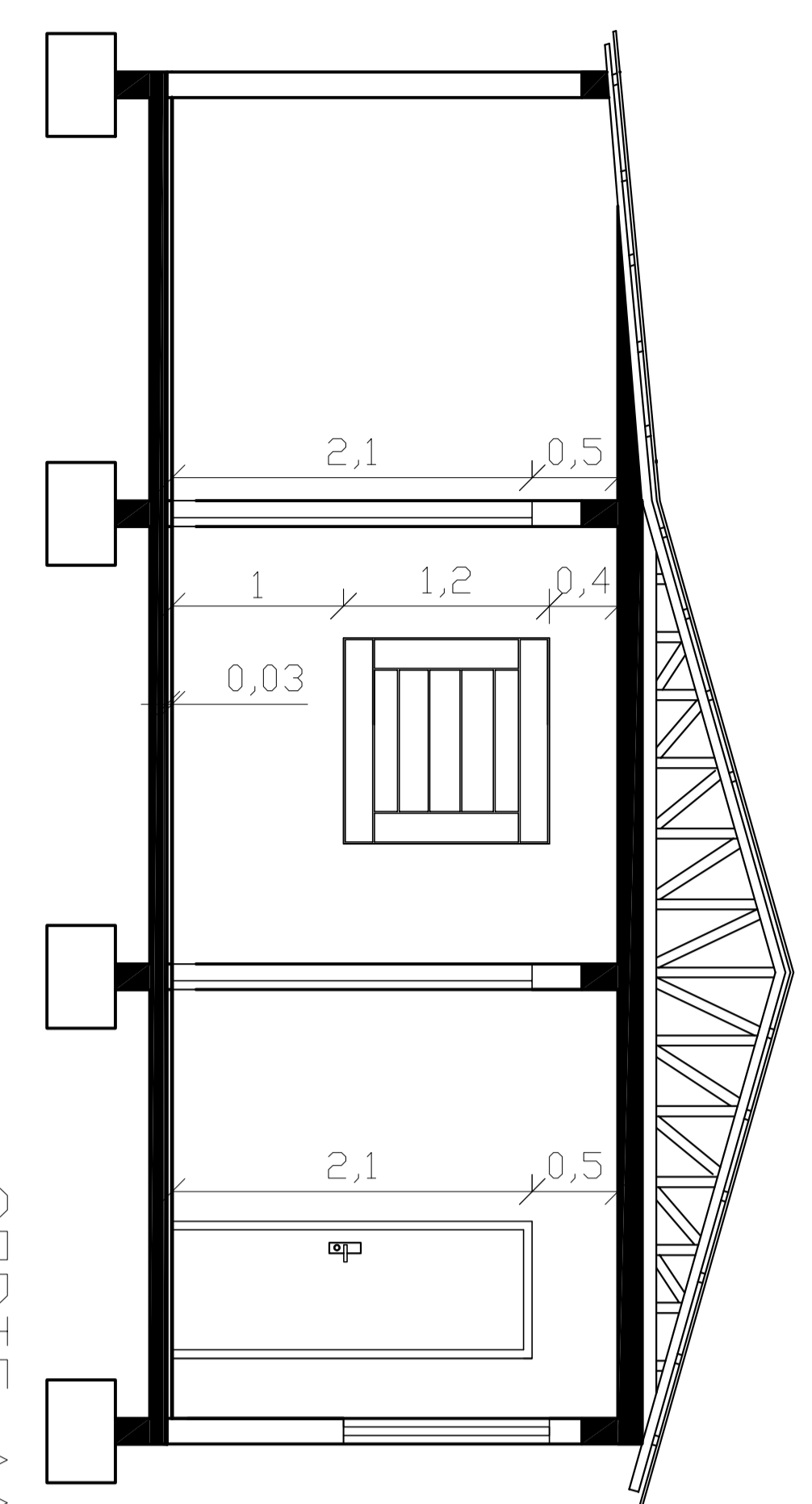
PLANTA BAIXA  
A: 43,25m<sup>2</sup>  
Esc.: 1/50



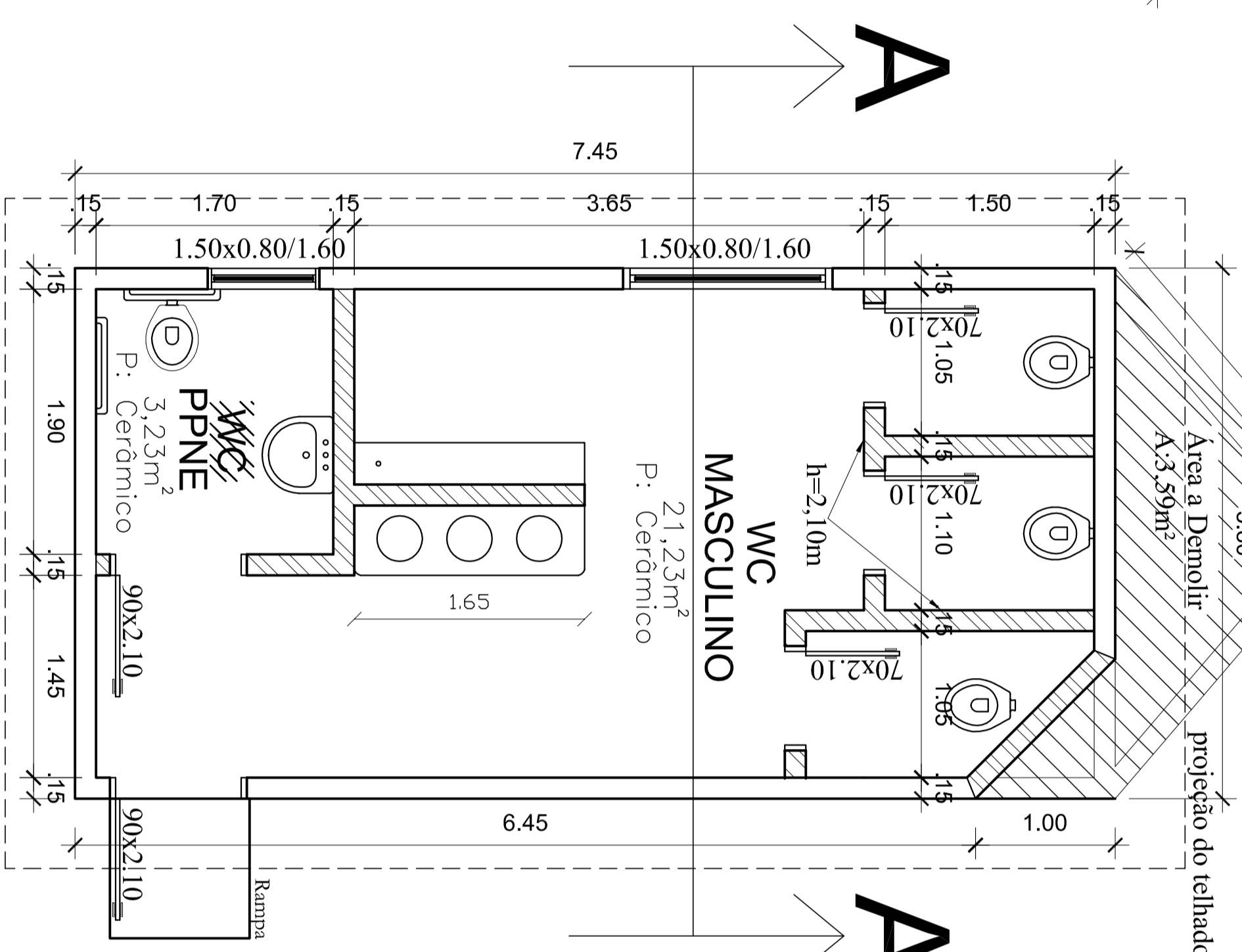
Corte AA - Wc Masc.  
E: 1/50



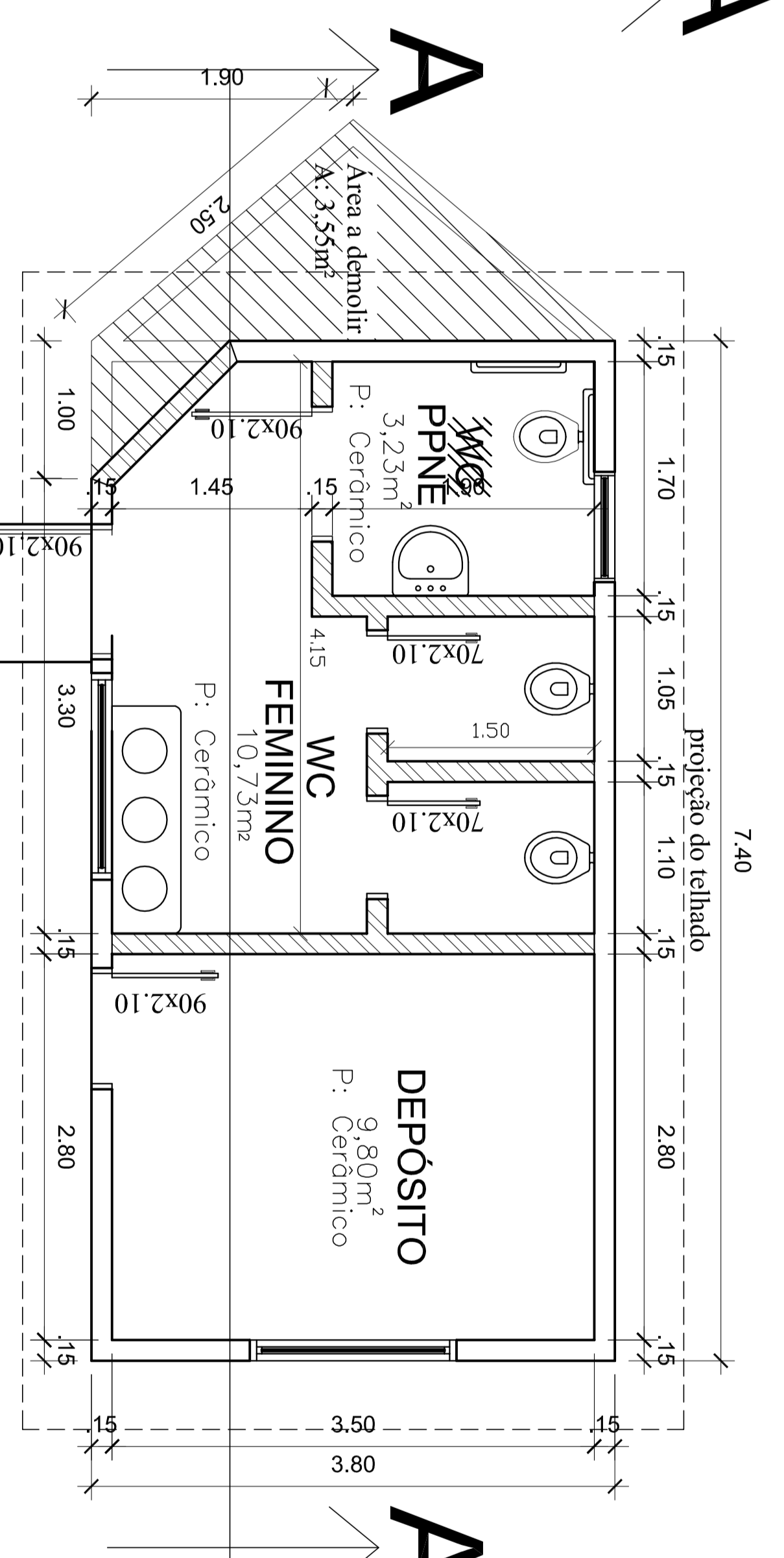
Corte AA - Wc Femenino  
E: 1/50



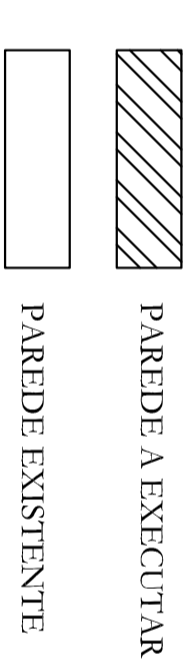
CORTE AA  
Esc.: 1/50

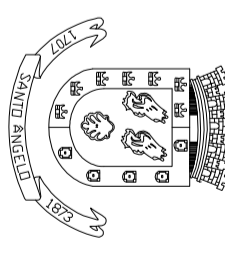


Planta Baixa - Wc Masc.  
A: 28,31m<sup>2</sup>  
E: 1/50



Planta Baixa - Wc Femenino  
A: 28,12m<sup>2</sup>  
E: 1/50



 <p>PREFEITURA MUNICIPAL DE SANTO ÂNGELO Secretaria Municipal de Obras e Serviços Urbanos Setor de Projetos</p>		<p><b>Obras:</b> Reforma e Adequação do Estádio Municipal Prefeito Municipal: Wilson Carlos Schreder</p>		<p>Local: Bairro: Materno Carsten Michalski</p>		<p>Procedimento: AR 04/04</p>	
<p>Arquiteto: Eng. Edler D. T. Guedes - CRCA/RS 145.446</p>		<p>Responsável Técnico: Eng. Edler D. T. Guedes - CRCA/RS 145.446</p>		<p>Indicada em: Data: 20/14</p>		<p>Secretário de Obras: Mauri Krupp</p>	